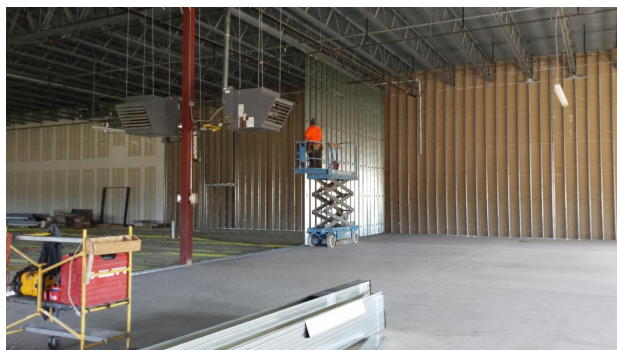




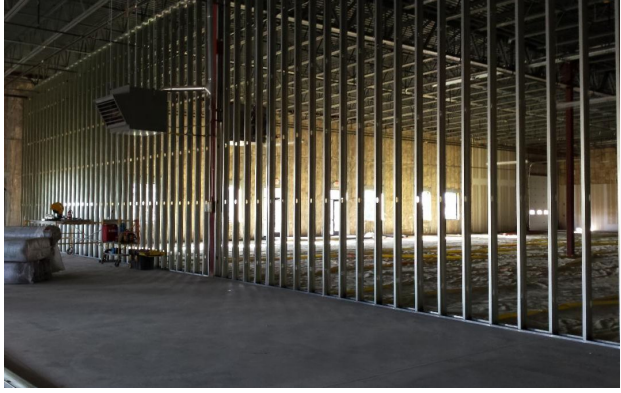
Congratulations to [Spearfish Brewing](#) on their recent victory at the [Great American Beer Festival](#)! This is the first GABF medal for South Dakota!

SEDC was proud to be a financial partner in Spearfish Brewing when they first launched, and we couldn't be prouder of their latest accomplishment! Read the full Forbes article: [These Are The Best Beers in America](#)



SEDC finishes another 6,000 square feet in the Atlas Building

Due to the arrival of new tenants and increased prospect activity at the Atlas Building, the Spearfish Economic Development Corporation (SEDC) has begun finishing out another 6,000 s/f of turn-key office and warehouse space. For lease information, contact the SEDC offices at (605) 642-3832.



How can we build a more robust Black Hills Business Community?

The SD Governor's Office of Economic Development (GOED) will present an informative seminar with an overview of South Dakota's economic strengths - including salary and wage comparisons - and take you on a tour of the new GOED interactive website as they mine data about our state and communities.

*October 16, 2019, 1-3 PM, Boulder Canyon Convention Center,
2715 Lazelle Street, Sturgis*

*October 17, 2019, 9-11 AM, Mueller Civic Center,
801 South 6th Street, Hot Springs*

10th Annual Women's Business Conference

Date: Friday, October 18, 2019

Time: 9:00 AM - 4:00 PM

Location: The Lodge at Deadwood,
Deadwood, SD

Fee: \$150

Keynote Speaker: [Jennifer Pharr Davis](#),
National Geographic Adventurer of the
Year, Record-breaking Long-distance
Hiker, Author, Business Owner, Mom

[More Details>>>](#)



Economic Development News



Keloland: [Scobi Kombucha: New local business created by women who attended BHSU](#)

Black Hills Business: [Menken: Business is Brewing in Spearfish](#)

KOTA TV: [Small businesses thrive in Spearfish](#)

Black Hills Community Economic Development: [2019 Black Hills Community Economic Development Roundup](#)

BY THE NUMBERS

Building Permits	2019	2018	YTD 2019	YTD 2018
New Residential	6		45	
New Commercial	0		8	
Total Permits	33	42	272	316
Total Dollars	\$2,684,485	\$3,413,207	\$ 29,273,181	\$39,608,337

Sales Tax	2019	2018	YTD 2019	YTD 2018
2nd Penny Sales Tax	\$379,227	\$396,211	\$3,145,652	\$2,984,956
Hospitality Tax	\$86,310	\$87,809	\$525,178	\$508,182

- Building Permits & Sales Tax based on most recent City of Spearfish report from September 2019.

Labor Force	2019	2018
City of Spearfish		
Total Labor Force	6,356	6,340
Total Employed	6,176	6,164
Total Unemployed	180	176
Percentage Unemployment	2.8%	2.8%
Lawrence County		
Total Labor Force	13,531	13,489
Total Employed	13,131	13,118
Total Unemployed	400	371
Percentage Unemployment	3.0%	2.8%
Northern Hills (Butte, Lawrence, Meade & Pennington counties)		
Total Labor Force	93,178	92,312
Total Employed	90,410	89,766
Total Unemployed	2,768	2,546
Percentage Unemployed	3.0%	2.9%

- Labor Force Data based on most recent SD Dept. of Labor & Regulation report from August 2019.

Upcoming Events

Lynn, Jackson, Shultz and Lebrun, P.C. - Open House

- Thursday October 10th, at 4:30 - 7:00 PM, 311 N. 27th Ave., Suite 4

Spearfish Area Chamber of Commerce - Coffee Connections

- Friday, October 11th, at 8 AM - 9 AM, Sundance State Bank - 725 N 12th Street, Spearfish

The Hook - Fall Retreat at Elkhorn Ridge

- Friday, October 11th at 5:30 PM - October 12th at 11:30 AM, Elkhorn Ridge Resort, [more details](#)

SD CEO - 10th Annual Women's Business Conference

- Friday, October 18th, 9 AM - 4 PM, The Lodge At Deadwood, 100 Pine Crest Ln

Spearfish Area Chamber of Commerce - Gone Fishin' Mixer

- Thursday, October 31st, at 4 PM - 6 PM, Miller Creek Pub & Patio, 6845 St Onge Oil Rd, Spearfish

Spearfish Area Chamber of Commerce - State of the Community

- Tuesday, November 5th, at 11:15 AM – 1 PM, Spearfish Holiday Inn & Convention Center

SD CEO - Luncheon

- Tuesday, November 12th, 8:30 AM - 9:30 AM, Spearfish Holiday Inn & Convention Center '76 Room

Please share your upcoming events with fellow SEDC members and friends. Send your events to [Laine Mitchell](#), SEDC Marketing Coordinator.

Spearfish Economic Development | 605-642-3832 | office@spearfishdevelopment.com | www.SpearfishDevelopment.com

Let's Be Friends!

